

National Partnership to Improve Dementia Care in Nursing Homes: Late Adopter Data Report (April 2019)

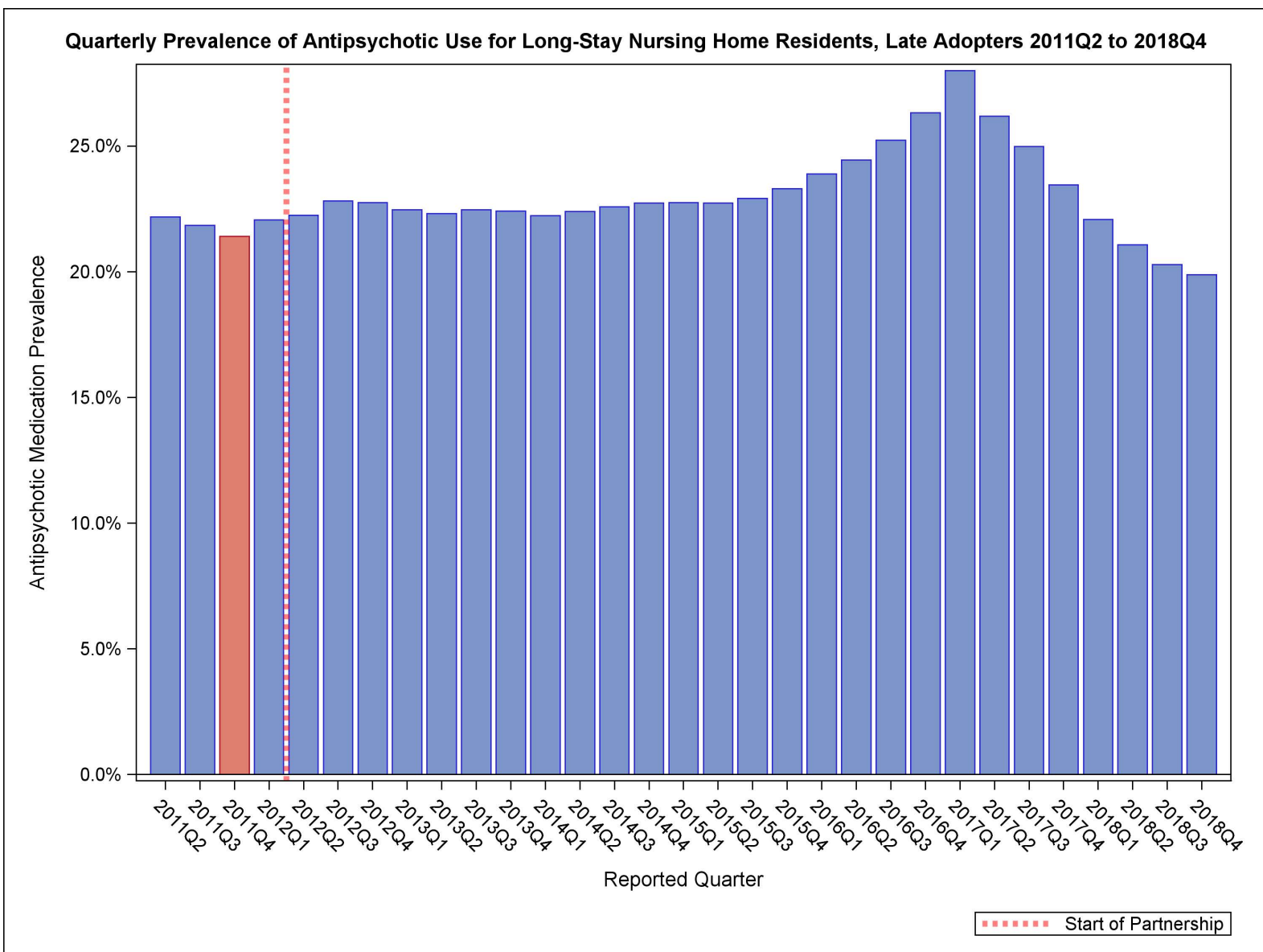
CMS announced that the National Partnership met its goal of reducing the national prevalence of antipsychotic medication use in long-stay nursing home residents by 30 percent by the end of 2016. It also announced a new goal of a 15 percent reduction in those homes with currently limited reduction rates.

Nursing homes with low rates of antipsychotic medication use are encouraged to continue their efforts and maintain their success, while those with high rates of use are to work to decrease antipsychotic medication use by 15 percent for long-stay residents by the end of 2019, using the prior baseline rate (2011Q4). These homes have been identified as late adopters.

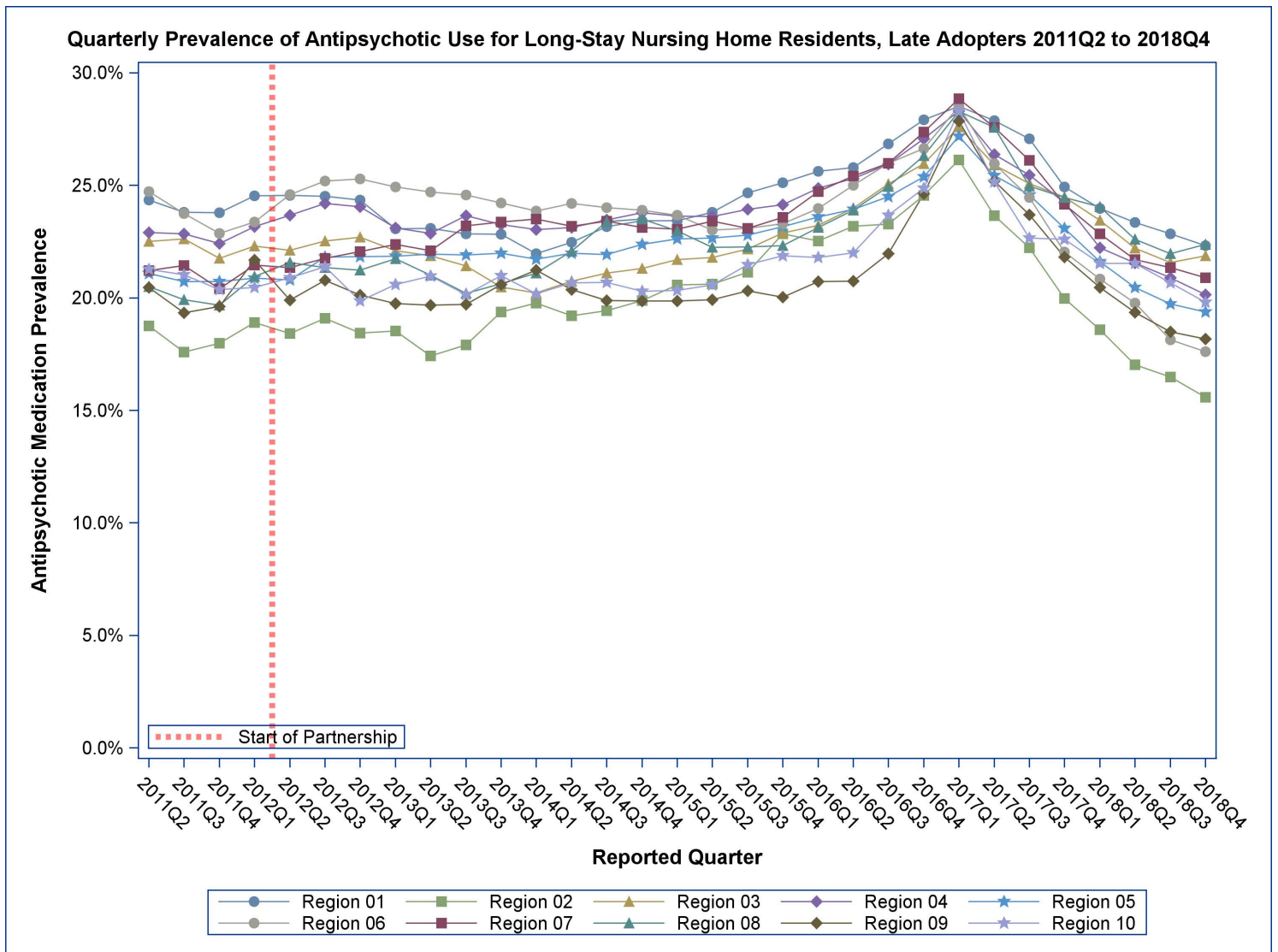
Nursing homes were identified as late adopters, based upon 2017Q1 data. These nursing homes continued to have a high rate of antipsychotic medication use, their percentage of change from 2011Q4 to 2017Q1 increased or decreased very little, and they remained above the national average in 2017Q1.

This quarterly data report is specific to the progress of the late adopters. In 2011Q4, 21.4 percent of long-stay nursing home residents, living in a nursing home identified as a late adopter, were receiving an antipsychotic medication; since then there has been a decrease of 7.1 percent to a national prevalence, among late adopters, of 19.9 percent in 2018Q4.

For more information on the National Partnership, please send correspondence to dnh_behavioralhealth@cms.hhs.gov.



Quarterly Prevalence of Antipsychotic Use for Long-Stay Residents, Late Adopters, CMS Regions



Region	Facility Count	2011Q4	2014Q3	2014Q4	2015Q1	2015Q2	2015Q3	2015Q4	2016Q1	2016Q2	2016Q3	2016Q4	2017Q1	2017Q2	2017Q3	2017Q4	2018Q1	2018Q2	2018Q3	2018Q4	Percentage point difference (2011Q4-2018Q4)	% Change
National	1508	21.4%	22.6%	22.7%	22.8%	22.7%	22.9%	23.3%	23.9%	24.4%	25.2%	26.3%	28.0%	26.2%	25.0%	23.5%	22.1%	21.1%	20.3%	19.9%	-1.53	-7.1%
Region 01	83	23.8%	23.2%	23.4%	23.4%	23.8%	24.7%	25.1%	25.6%	25.8%	26.8%	27.9%	28.5%	27.9%	27.1%	24.9%	24.0%	23.4%	22.8%	22.3%	-1.47	-6.2%
Region 02	41	18.0%	19.4%	19.9%	20.6%	20.6%	21.1%	22.9%	22.5%	23.2%	23.3%	24.6%	26.1%	23.6%	22.2%	20.0%	18.6%	17.0%	16.5%	15.6%	-2.39	-13.3%
Region 03	145	21.8%	21.1%	21.3%	21.7%	21.8%	22.2%	22.9%	23.2%	24.0%	25.1%	26.0%	27.6%	25.9%	25.1%	24.5%	23.4%	22.2%	21.6%	21.9%	0.10	0.5%
Region 04	290	22.4%	23.5%	23.8%	23.6%	23.6%	23.9%	24.1%	24.9%	25.3%	26.0%	27.1%	28.3%	26.4%	25.5%	24.2%	22.2%	21.6%	20.9%	20.2%	-2.26	-10.1%
Region 05	358	20.7%	21.9%	22.4%	22.6%	22.7%	22.8%	23.2%	23.6%	23.9%	24.5%	25.4%	27.2%	25.4%	24.6%	23.1%	21.6%	20.5%	19.7%	19.4%	-1.37	-6.6%
Region 06	218	22.9%	24.0%	23.9%	23.7%	23.0%	23.1%	23.3%	24.0%	25.0%	26.0%	26.6%	28.5%	26.0%	24.5%	22.0%	20.8%	19.8%	18.1%	17.6%	-5.25	-23.0%
Region 07	198	20.4%	23.4%	23.1%	23.0%	23.4%	23.1%	23.6%	24.7%	25.4%	26.0%	27.4%	28.8%	27.6%	26.1%	24.2%	22.8%	21.7%	21.4%	20.9%	0.49	2.4%
Region 08	66	19.7%	23.4%	23.5%	23.0%	22.2%	22.3%	22.3%	23.1%	23.9%	24.9%	26.3%	28.3%	27.6%	25.0%	24.5%	24.1%	22.6%	22.0%	22.4%	2.70	13.7%
Region 09	58	19.6%	19.9%	19.9%	19.9%	19.9%	20.3%	20.0%	20.7%	20.7%	22.0%	24.6%	27.9%	25.2%	23.7%	21.8%	20.5%	19.4%	18.5%	18.2%	-1.44	-7.4%
Region 10	51	20.4%	20.7%	20.3%	20.3%	20.6%	21.5%	21.9%	21.8%	22.0%	23.7%	24.9%	28.3%	25.2%	22.7%	22.6%	21.5%	21.5%	20.7%	19.8%	-0.57	-2.8%

