

Thank you to our 2022 LeadingAge Kansas Partners



LeadingAge Kansas Weekly Webinar February 25, 2022

www.leadingagekansas.org/covid19



LeadingAge[®]

**The Trusted Voice
for Aging**

LeadingAge.org



LeadingAge Kansas Weekly Webinar

February 25, 2022

Katie Smith Sloan, President and CEO, LeadingAge

| TO BE THE TRUSTED VOICE FOR AGING

LeadingAge: Organizing Strategies

Equipping and positioning members for success

Catalyzing models responsive to a diversity of needs
and preferences

Leveraging the strengths of aging services providers for
greater impact

LeadingAge[®]

| NURSING HOME ADVOCACY

- Workforce: \$2000 one-time payment
Training \$
Temp staffing agencies
- Provider Relief Funds
- Relief on NMSN
- CNA Training Lock out
- Access to oral therapeutics
- Medicaid - FMAP increase
- NAS Study

OTHER ADVOCACY ISSUES

- Workforce, workforce, workforce
- Telehealth
- Affordable housing
 - Service coordinators
- Home health and hospice

| NETWORKS

Nursing Homes

Assisted Living

Hospice

Home Health

LPC's

Housing

PACE



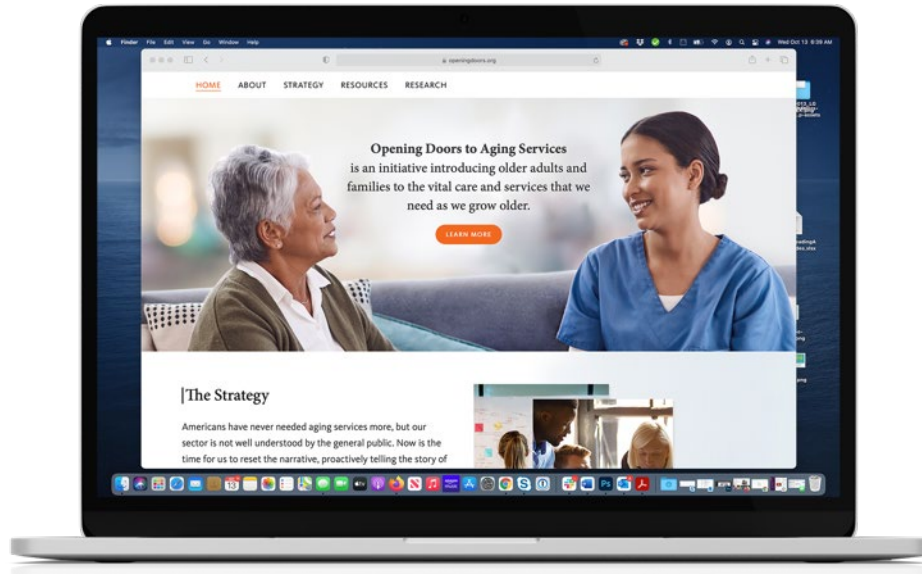
Opening Doors to Aging Services

Sharing Our Insights

LeadingAge®

LeadingAge®

What is Opening Doors to Aging Services?

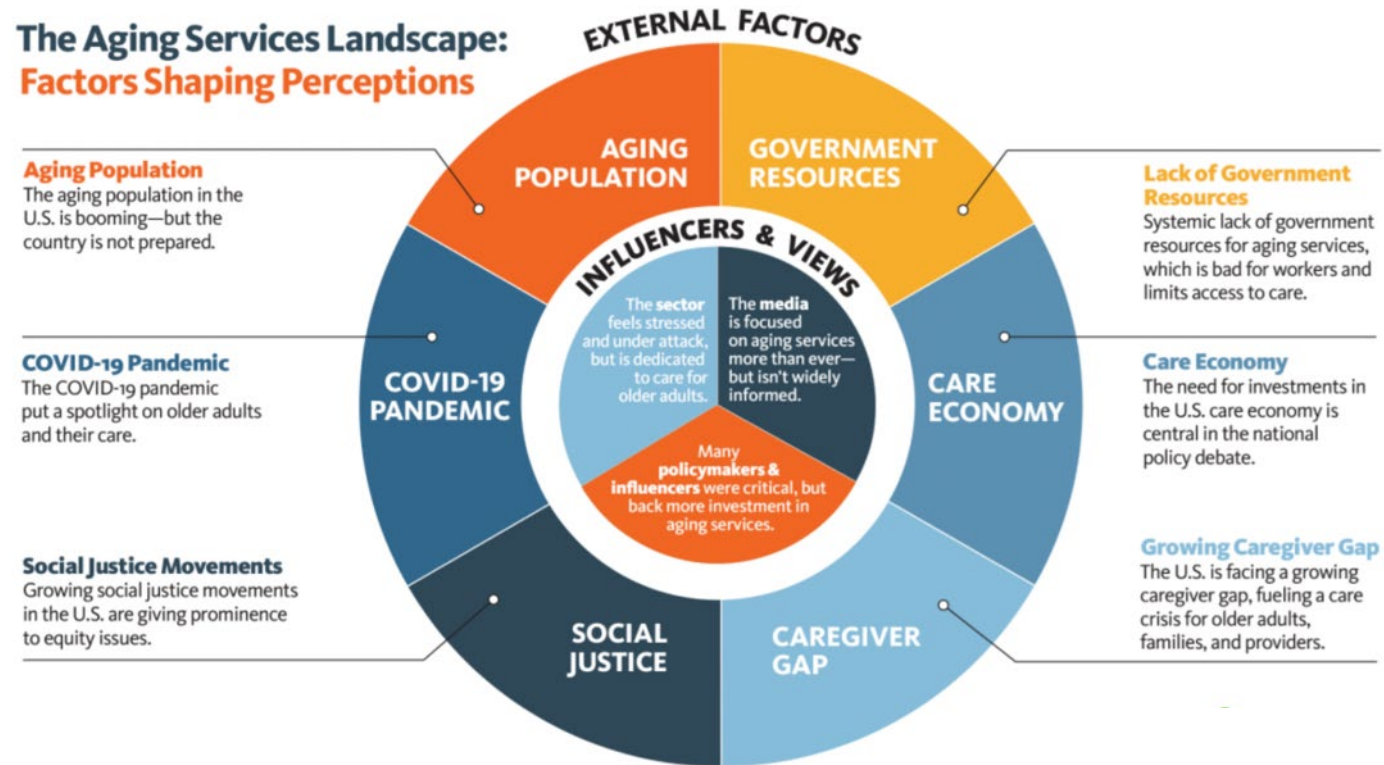


- A **multi-year, national-local** research and communications initiative.
- Initiated in 2020 **to serve profound member need** (along with governance and workforce).
- Introduces the public to the **cross-continuum aging services sector**.



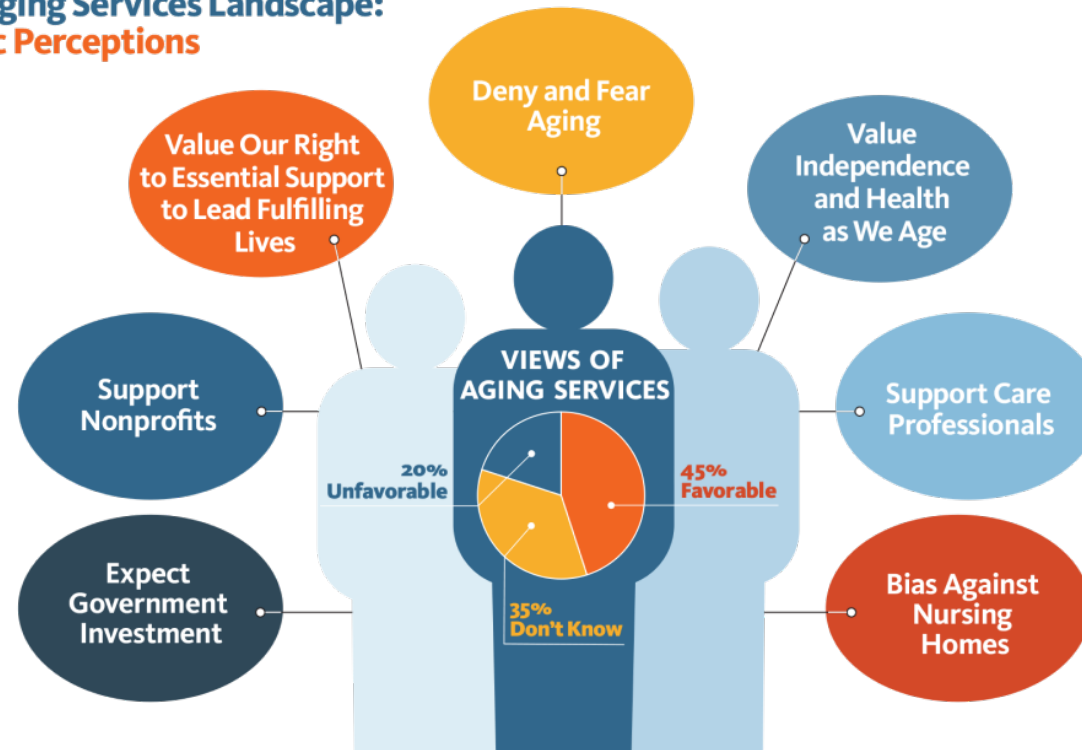
| Key Learnings & Strategies

The Aging Services Landscape

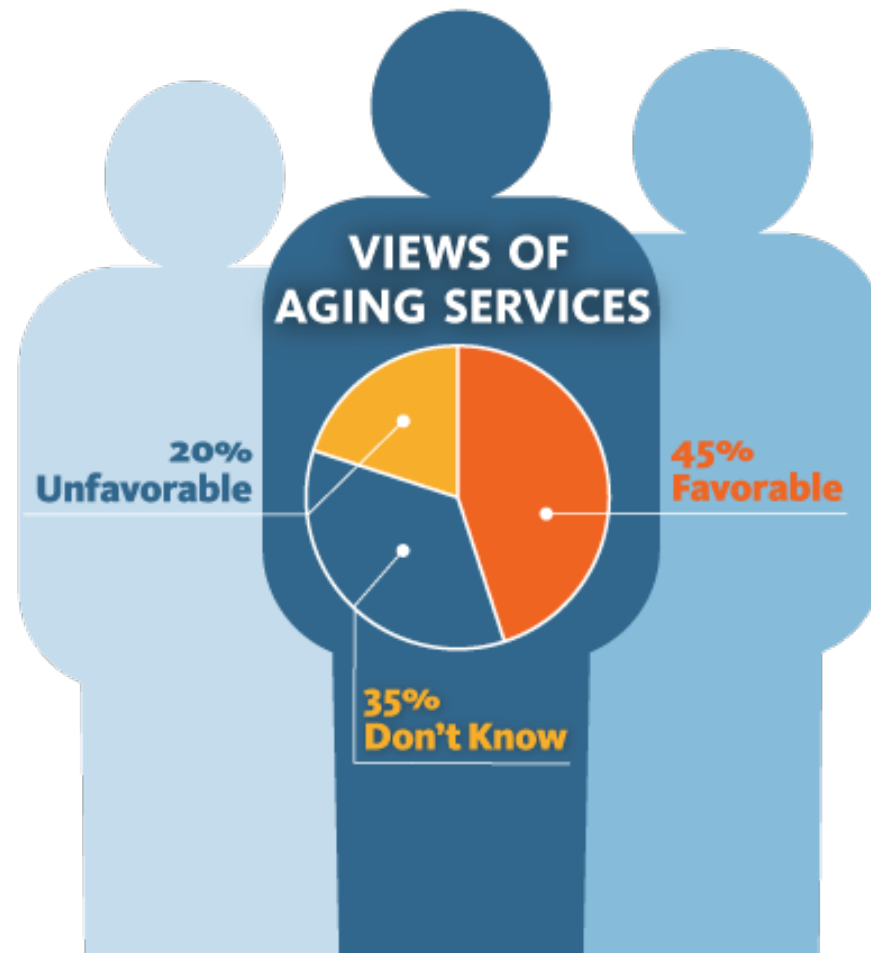


The Aging Services Landscape

The Aging Services Landscape: Public Perceptions



One Third Don't Know Us



Opening Doors Strategies



Offer a **look into**
aging services



Focus on **older adults and**
their families, not on
providers.



Talk about **“us,”**
not **“them.”**



Emphasize
independence
and **strength**



Highlight **dedicated,**
compassionate care
professionals



Demonstrate commitment
to delivering **quality care**
and **services**



Frame aging services as a
basic right for everyone.



Emphasize support for
greater government
investment in aging
services

Communicating Effectively: Language

DO SAY

Aging services

Sector, Field

Community, Residence

Nonprofit, Nonprofit Organization

Caregiving professional, Professional caregiver

Older adults

DON'T SAY

Elder care, Aged care

Industry, Market

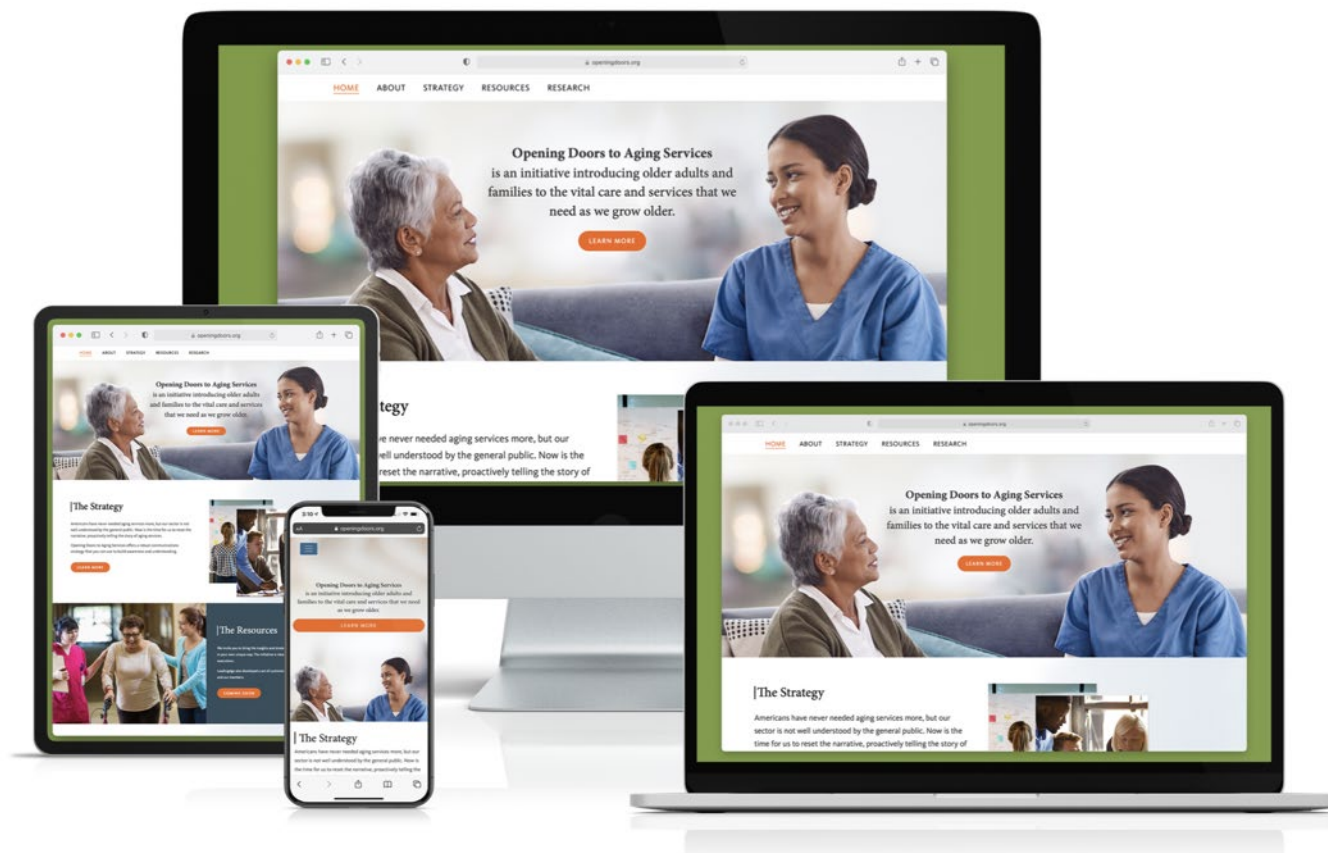
Facility, Institution, Building

Company, Business

Care worker, Unskilled worker

The elderly, The aged

Visit OpeningDoors.org



LeadingAge®

How to Get Involved: Member Sessions

- **FREE QuickCasts on Research and Strategies:** Available now!
- **Workshop Series on Implementation:** January-April covering core channels, messaging, event, creative.
- **4-Hour Intensive at Leadership Summit:** March 28-30 in Washington DC
- **Consumer-facing Campaign Rollout:** Debut April 2022

| Discussion

LeadingAge

LeadingAge[®]

Federal Update

New [CDC Guidance](#) on 8 week interval between primary mRNA vaccine doses. No announcement from CMS on adopting this new guidance.

Updated [CDC guidance](#) on antigen testing in long term care. Streamlined guidance and links, clarifies time period for confirmatory testing

HRSA [announced](#) today that it will be sending out \$560 million from the \$17.5 billion available for the Phase 4 general distribution. Here is a short [article](#) on the announcement.

State Update

- **Battelle Update: 7 weeks until March 31 deadline**
- [Here](#) is more information about the Battelle Testing Program. Here is the [KDHE memo issued on February 7, 2022](#) with critical information regarding future lab testing availability and discontinuation of funding.
- KDHE responses to questions raised at the February 18th webinar [now available](#)
- **Please chat in:**
 1. If you've had a KDADS survey since February 13th and let us know how surveyors dealt with the new vaccine requirements.
 2. "Extra precautions" you are implementing for unvaccinated staff.

Legislative Update

[HB 2524](#) (staffing agency reform) did not meet legislative deadlines this week and died in the House yesterday

[SB 453](#) (CNA training bill) approved 40-0 in Senate, now we move to the House and repeat the process

FY 2023 Budget

House Social Service Budget Recommendations:

- Full Medicaid funding for nursing homes
- 10% funding increase for HCBS/FE
- Directive to KDADS to issue RN staffing requirement waivers in nursing homes (already allowed under CMS rules)

Senate Ways and Means Subcommittee on Human Services will meet March 1st to vote on their recommendations.

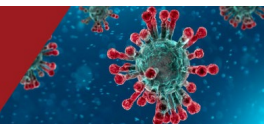
LeadingAge Kansas

CALL FOR NOMINATIONS

LeadingAge Kansas Board of Directors



<http://www.leadingagekansas.org/nominations>



Webinar: Building Relationships and Staff Retention

Tuesday March 29th, 1:00-2:00 PM

Carmen Bowen | Edu-Catering

Learn the simple, no cost, very meaningful culture change practices that build relationship and result in even better regulatory compliance, better work life for those who work there let alone better *life* for those who *live* there.

[Click here to register](#)

Send questions to nicole@leadingagekansas.org

Webinar: Montessori Principles for Staff and Leadership

Tuesday March 22nd, 1:00-2:00 PM

Presented by Gary Johnson, MSW | Monarch Pathways

Designed for administrators and department managers, this webinar introduces participants to Montessori-based approaches to engaging and retaining staff in long-term care. Drawing on key principles of dignity, equality and respect, participants will learn how to empower staff at all levels to find meaning and purpose in their work, bring their unique talents and perspectives to their roles, and build a culture where employees feel valued and supported.

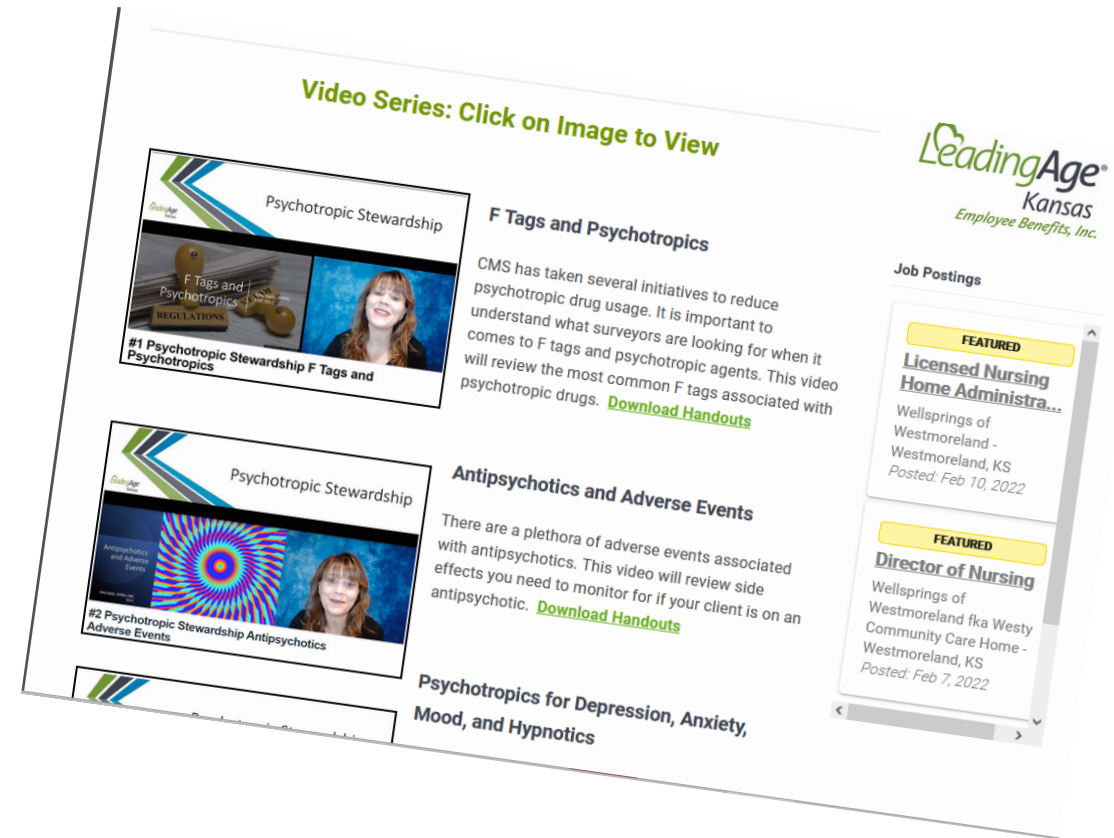
[Click here to register](#)



[Http://www.leadingagekansas.org/psych](http://www.leadingagekansas.org/psych)

- Short educational videos by Amy Siple, APRN
- Affinity Group for peer-to-peer support and learning
- Technical Assistance with 1 hour provided free by LK

[Sign up for the first affinity group discussion](#) on Thursday, March 3rd from 1 – 2:30 PM. We have 21 signed up so far so this will be a great discussion.



Spring Conference & Expo

April 14 – 15, 2022

Wichita @ Hyatt Regency and Century II

We are excited to announce registration is open!

Register with discount code "FRIYAY" for 20% off your registration.

Check out our agenda and session descriptions will be coming soon!

Official Webpage for the Conference is:

<http://www.leadingagekansas.org/22spring>



Upcoming Weekly Webinar Guest Presenters*

March 4th

Karen Sturchio and Treva Greaser

How We Decreased Temporary Staffing Agency Use.

Value First PPE and Testing Update

- **McKesson, Value First's preferred distribution partner, supply chain update:**
 - All rapid antigen tests are currently under allocation.
 - Allocation has become available however please allow for a **minimum three-week backorder delay**.
 - Additional PPE supplies continue to be readily available however plastic and paper products are still harder to stock consistently.
 - McKesson has seen a recent reduction in cost for gloves so please reach out!
 - Continue to be in close contact with your McKesson representative with the additional needs you might have. , Scott Fleet.
(816.305.7177) scott.fleet@mckesson.com
- Should your community have challenges finding any product in high demand, please reach out to ann@leadingagekansas.org

Mindfulness Minute



