

Farah S. Ahmed, MPH, PhD, State Epidemiologist
Statewide COVID-19 Testing Strategy
July 20, 2020

Kansas Statewide Strategy for COVID-19 Specimen Collection and Testing

KANSAS STATEWIDE STRATEGY FOR COVID-19 SPECIMEN COLLECTION AND TESTING

INTRODUCTION

To facilitate a rapid increase in statewide testing for COVID-19, the Kansas Department of Health and Environment (KDHE) has developed a set of priorities and recommendations outlined below. Included are implementation guidelines, as well as a set of hierarchical priorities for various types of facilities to assist with the management of collection of diagnostic specimens and subsequent testing. Because facilities of diverse scopes and sizes will have distinct technical capabilities and infrastructure, this document will clarify a hierarchy of priorities for each type of facility. If a facility is not specifically described in this document, priorities can be extrapolated based on their capabilities and infrastructure.

GOAL/PURPOSE

The goal of this strategy is to facilitate a rapid increase in statewide testing for COVID-19 utilizing all testing sites and platforms available. KDHE will work with vendors, laboratories and local sampling sites to help ensure that testing supplies and platforms are in place or easily mobilized to support communities, Kansas local health departments and to support the early detection of outbreaks in congregate settings.

DEFINITIONS

Sampling: The collection of specimens (e.g. nasopharyngeal swabs, serum) from individuals suspected of having COVID-19 disease and submitted for diagnostic testing.

Molecular Testing: A procedure performed on a collected specimen to confirm the presence or absence of the virus that causes COVID-19 disease.

Serological Testing: A procedure performed on a collected specimen to confirm the presence or absence of antibodies produced by the body in response to a COVID-19 infection.

IMPLEMENTATION STRATEGIES

KDHE is striving to identify and monitor the statewide daily testing capacity by identifying available platforms and supplies across the state. Part of this strategy includes supporting overflow testing for facilities by accepting samples that exceed their capacity. While the daily monitoring of supplies and capacity is the responsibility of each facility, KDHE will assist with allocating resources in the event of supply shortages, coordinating overflow testing facilities and receiving samples for testing from those facilities that lack the ability to conduct in-house testing or contract with a reference laboratory.

- For most testing through the state laboratory, persons must meet the PUI criteria promulgated by the State Epidemiologist. Currently, this is symptomatic persons with at least two symptoms from the PUI criteria. Providers testing through a reference lab may choose to test symptomatic patients with fewer or different symptoms and the state laboratory may test persons that do not meet PUI criteria based on epidemiological need.

Where to find the Statewide Strategy

KDHE Coronavirus (COVID-19) Response

- COVID-19 Cases in Kansas
- A Plan to Reopen Kansas
- Travel Information
- Testing for COVID-19**

Secretary Lee Norman, M.D.
Kansas Department of Health and Environment

[CustomLinks_2](#) • COVID-19 Testing

COVID-19 Testing

Kansas Testing Strategy

To learn more about COVID-19 in Kansas, the state has a goal of testing 2 percent of the population each month using diagnostic (molecular) tests. A set of priorities, recommendations and strategies provide the framework to inform decisions and options for testing, and to ensure that testing platforms and supplies are in place or can be mobilized easily to support these strategies. Learn more by reading the [Kansas Strategy for COVID-19 Testing](#).

Testing Plan Materials

- [Testing Priorities in Kansas](#)
- [Executive Summary](#)

Testing Locations

The maps are fluid and will be updated as more testing sites become available. To maximize your experience, use a device with a larger screen, such as a tablet, laptop or desktop.

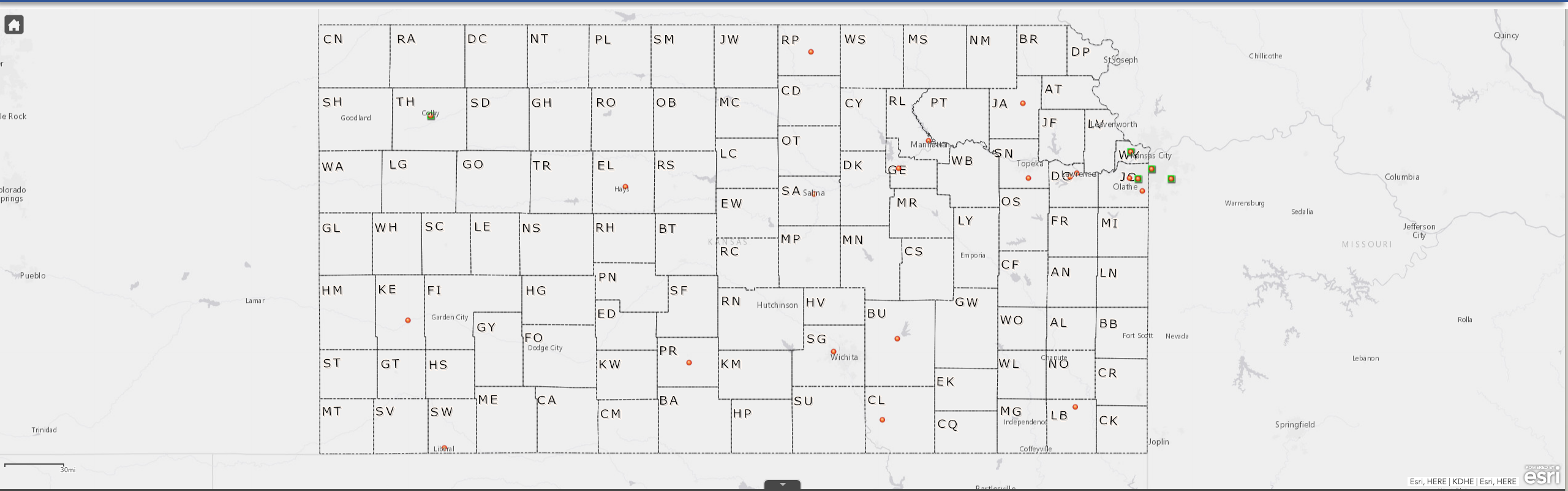
- [COVID-19 Testing Sites](#)
- [County Health Departments & Clinics](#)



Secretary Lee Norman, M.D. discusses COVID-19 testing options and answers frequently asked questions.



Laboratories Across the State

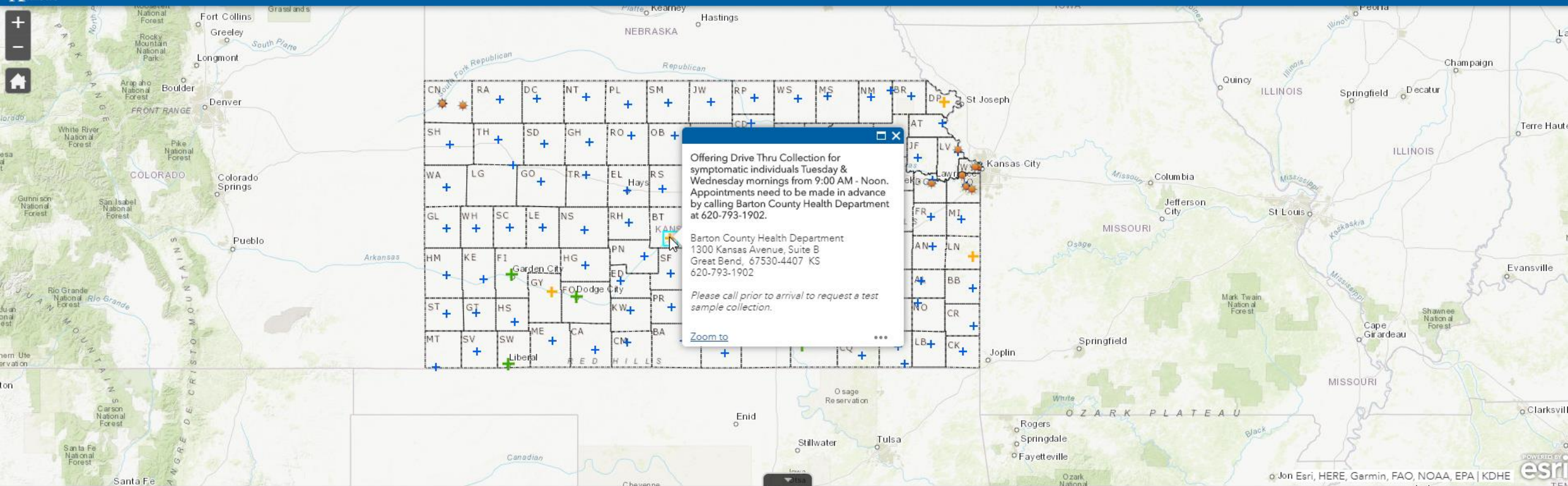


Diagnostic Testing Labs						Serological Test Lab
Options Filter by map extent Zoom to Clear selection Refresh						
PCR COVID TEST	Antigen COVID Test	Serological COVID Test	Facility Name	Address	Accept Outside Samples	
Yes	No	No	4M Healthcare	15110 Glenwood, Overland Park, KS 66223	Yes	
Yes	No	Yes	Citizens Medical Center	100 E College Dr, Colby, KS 67701	Yes	
Yes	No	No	City-Cowley County Health Department	320 E 9th Avenue, Suite B, Winfield, KS 67156	Yes	
Yes	No	No	Cytocheck Laboratory	1201 Corporate Dr, Parsons, KS 67357	Yes	
Yes	No	No	Geary Community Hospital	1102 St Marys Rd, Junction City, KS 66441	Yes	
Yes	No	No	Jackson Co -NEK Multi County Health Department	312 Pennsylvania Avenue, Holton, KS 66436	Yes	
Yes	No	No	K-State University Rabies Lab	2005 Research Park Cir, Manhattan, KS 66502	Yes	
Yes	No	No	Kansas Health & Environmental Laboratories	6810 SE Dwight, Topeka, KS 66620	Yes	
Yes	No	No	Kearny County Hospital	500 E Thorpe St, Lakin, KS 67860	Yes	
Yes		Yes	LabCorp - KC KS	8101 Parallel Pkwy #400, Kansas City, KS 66112	Yes	

To protect and improve the health and environment of all Kansans

Testing Sites Across the State

Kansas COVID-19 Sample Collection Sites and Health Departments



KS COVID-19 Sample Collection Locations

Options ▾ Filter by map extent 🔍 Zoom to ☒ Clear selection 🔄 Refresh						
Name	Address	City	State	Zip	Phone	COVID Test Location
Barton County Health Department	1300 Kansas Avenue, Suite B	Great Bend	KS	67530-4407	620-793-1902	Health Dept Collection Site
Kiowa County Health Department	302 E Florida Avenue	Greensburg	KS	67054-2292	620-723-2136	
Health Ministries Halstead Clinic	126 Main St.	Halstead	KS	67056	316-835-3700	
Ellis County Health Department	2507 Canterbury Dr	Hays	KS	67601-4230	785-628-9440	
Brown NEK-Multi County Health Department	907 S 2nd Street	Hiawatha	KS	66434-2774	785-742-2505	
Graham County Health Department	225 N Pomeroy Street	Hill City	KS	67642-1815	785-421-3326	

Goal/Purpose

- To facilitate rapid increase in statewide testing for COVID-19 utilizing all testing sites and platforms available.
- Priority for the state lab is to support the work of local health departments
 - Drive-through or by appointment testing
 - Outbreak management
- Secondarily, to directly support other entities
 - Mobile testing in certain populations
 - State-run facilities

Who can be tested?

- For the most part, testing at the state lab is for people who meet Person Under Investigation (PUI) criteria.

Definition of a Person Under Investigation (PUI)
Report PUIs to KDHE immediately by faxing a reportable disease form to 1-877-427-7318

Epidemiologic Risk	&	Clinical Features
Close contact [^] with a person that has laboratory-confirmed COVID-19 and developed symptoms within 14 days of contact	<u>and</u>	At least two of the following symptoms; fever*, chills, rigors, myalgia, malaise, headache, sore throat, lower respiratory illness (cough, shortness of breath, or difficulty breathing), new olfactory and taste disorders, or diarrhea without an alternate more likely diagnosis.
History of travel [§] within 14 days of symptom onset	<u>and</u>	
No source of exposure has been identified		

View the PUI criteria at:
<https://www.coronavirus.kdheks.gov/170/Healthcare-Providers>

[^]Being within 6 feet for a prolonged period (10 minutes or longer) or having direct contact with infectious secretions of a COVID-19 case (e.g., being coughed on)
^{*}Measured fever of 100.4°F. Fever CANNOT be subjective
[§]History of travel includes travel outside of the U.S. to countries with travel advisories (<https://www.cdc.gov/coronavirus/2019-ncov/travelers/index.html>), travel to states with cases of COVID-19 (<https://www.cdc.gov/coronavirus/2019-ncov/cases-in-us.html>), and attendance to mass gatherings (e.g. conferences, cruises, concerts).

- Providers testing through a reference lab do not need to use the KDHE PUI criteria

When is it okay to test asymptomatic people?

- Outbreaks at congregate living facilities, both symptomatic and asymptomatic people may be tested.
 - There has to be a clear Public Health action that comes from testing everyone on a floor, wing, building, or within the facility.
 - KDHE and the LHD will work with the facility to make sure there is a feasible plan in place for cohorting positive residents away from everyone else
 - If there is no feasible way to cohort positive residents, or if there is no decision/action that is going to be taken that affects staffing levels, the use of PPE, etc. widespread testing may not be recommended.

When is it okay to test asymptomatic people?

- KDHE has an interest in certain target populations for more widespread testing that may include testing of asymptomatic people
 - Elderly
 - People with underlying health conditions
 - Certain minority groups that are disproportionately affected and having higher disease rates and deaths
 - Certain minority groups for which there is limited testing data
 - People living in congregate settings
 - Etc.

Current Expectation for COVID-19 testing in LTCFs/nursing homes/ etc.

- Testing for identification of cases is the responsibility of the facility
 - Facilities should monitor staff and residents for symptoms of COVID-19 and use their established resources to have symptomatic people tested

Current Expectation for COVID-19 testing in LTCFs/nursing homes/ etc.

- Facility-wide testing after a confirmed case is found can be done through KHEL
 - Once the first case is found, KDHE and the local health department will coordinate to provide supplies for testing through the state laboratory
 - KDHE further supports the facility by working with them on a plan to cohort positive patients away from negative patients and to reduce transmission between the groups
 - We recommend testing any negative people from the group about 5 to 7 days later. KDHE will support this testing through the state lab. However, any additional testing of negative people is the responsibility of the facility.

Who pays for testing through the state laboratory?

- The Kansas Health and Environmental Laboratories (KHEL) will provide the testing supplies at no cost to the patient or the facility
 - Tubes with viral transport media
 - Swabs
 - Coolers and ice packs if needed
- KHEL will analyze the sample at no cost to the patient or the facility
- If the facility is contracting with a provider to collect the samples, the provider may assess a collection fee.
 - KHEL and KDHE are not responsible for any sample collection fees charged

What kind of testing is available through the state laboratory?



- The Kansas Health and Environmental Laboratories (KHEL) provides PCR testing which is used for diagnostic purposes
 - Other reference labs may provide antigen testing, which is also adequate, though not preferred, for diagnostic purposes. However, be aware that there are only two antigen tests with approval from FDA

Individual EUAs for Antigen Diagnostic Tests for SARS-CoV-2

This table includes information about authorized SARS-CoV-2 antigen diagnostic tests that have been authorized individually. These EUAs have been issued for each individual test with certain conditions of authorization required of the manufacturer and authorized laboratories.

Search:

Show entries

Date EUA Issued	Manufacturer	Diagnostic (Letter of Authorization)	Technology	Authorized Setting(s) ¹	Authorization Documents ²
 07/02/2020	Becton, Dickinson and Company (BD)	BD Veritor System for Rapid Detection of SARS-CoV-2	Antigen	H, M, W	HCP, Patients, IFU
 05/08/2020	Quidel Corporation	Sofia SARS Antigen FIA	Antigen	H, M, W	HCP, Patients, IFU

Showing 1 to 2 of 2 entries

Previous **1** Next

View the list of FDA approved tests at:
<https://www.fda.gov/medical-devices/coronavirus-disease-2019-covid-19-emergency-use-authorizations-medical-devices/vitro-diagnostics-euas>

Does KDHE Recommend a Testing-based Strategy to Release Cases from Isolation?

- KDHE has developed a useful graphic about the [release from isolation and quarantine](#).
- A symptomatic case should stay home for 10 days from the onset of symptoms OR
- 72 hours after fever is gone without the use of fever reducing medication AND there has been a significant improvement in symptoms
- WHICHEVER IS LONGER. Meaning, isolation for confirmed symptomatic cases is a minimum of 10 days.
- If the case is asymptomatic, then they should stay home for 10 days since the day their sample was taken. If they develop symptoms during this 10-day period, then they would begin a new isolation period as described above for symptomatic cases.

Questions?